



# Row Houses - Ocean view

Tenerife , Playa San Juan



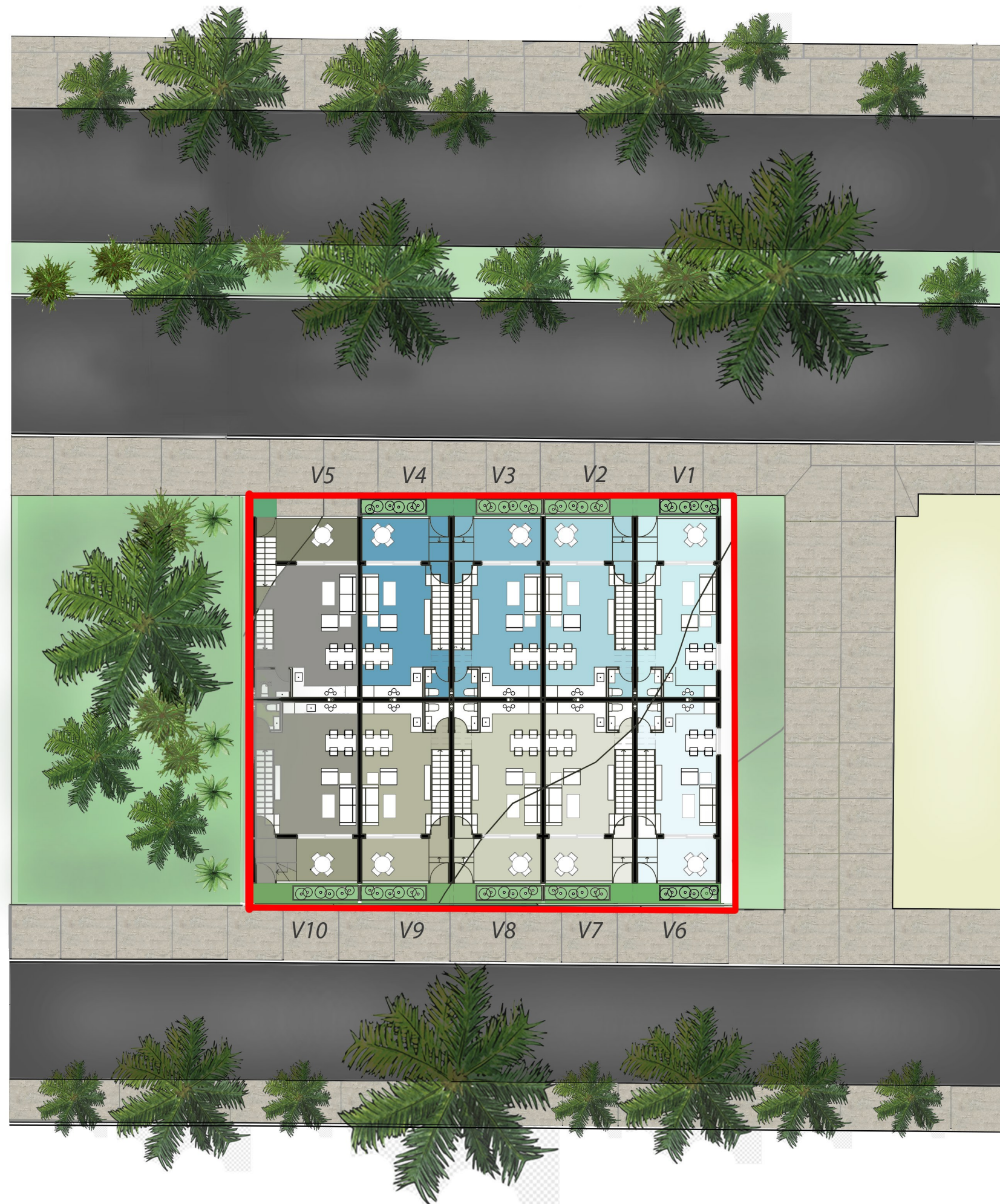


TENERIFE

PLAYA SAN JUAN , C.Pleamar str.

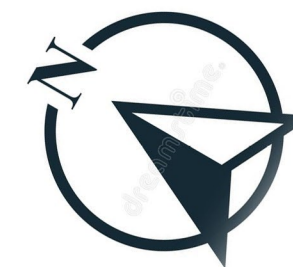
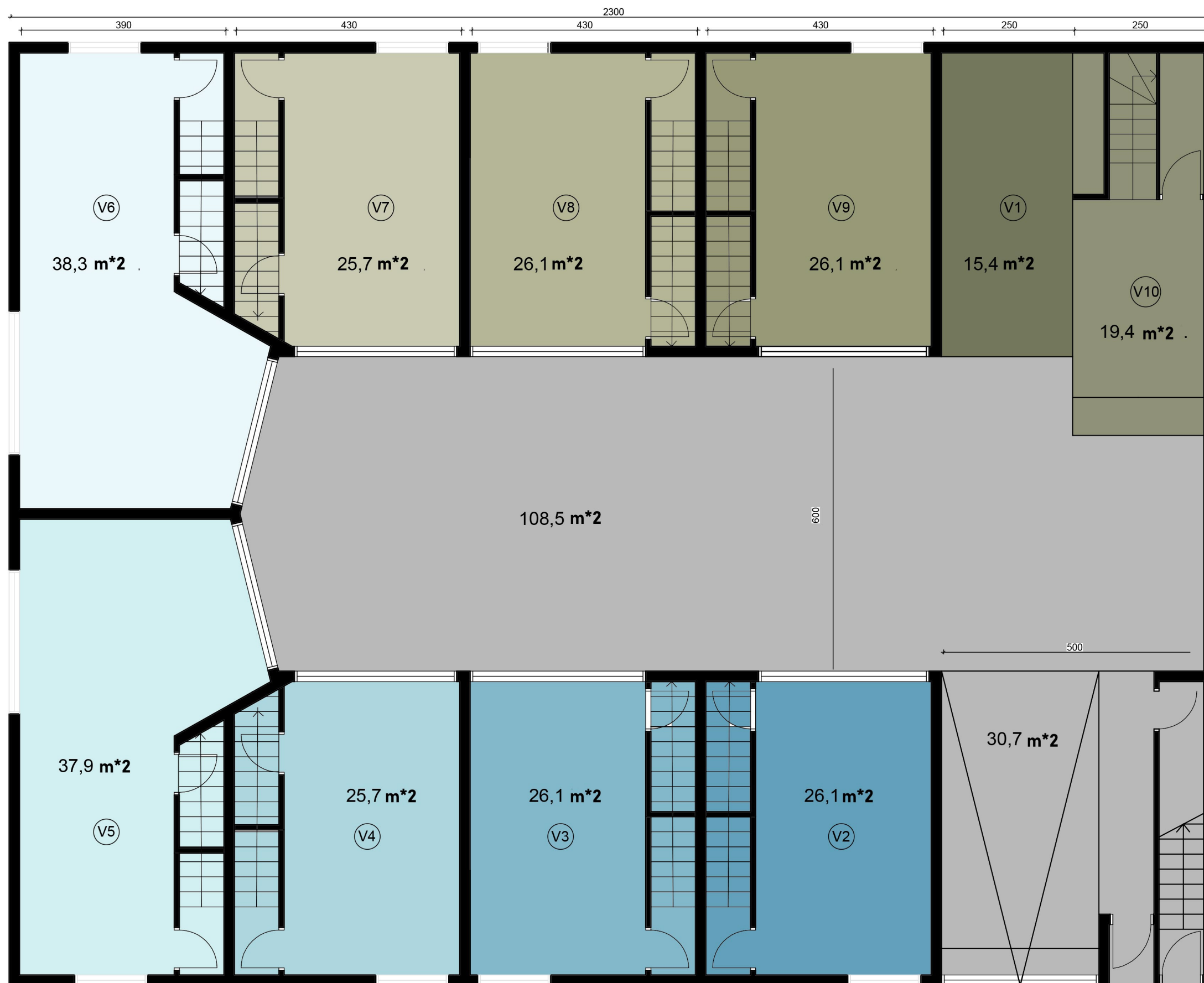






# Site Plan



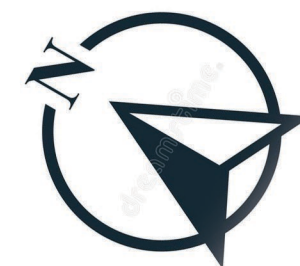
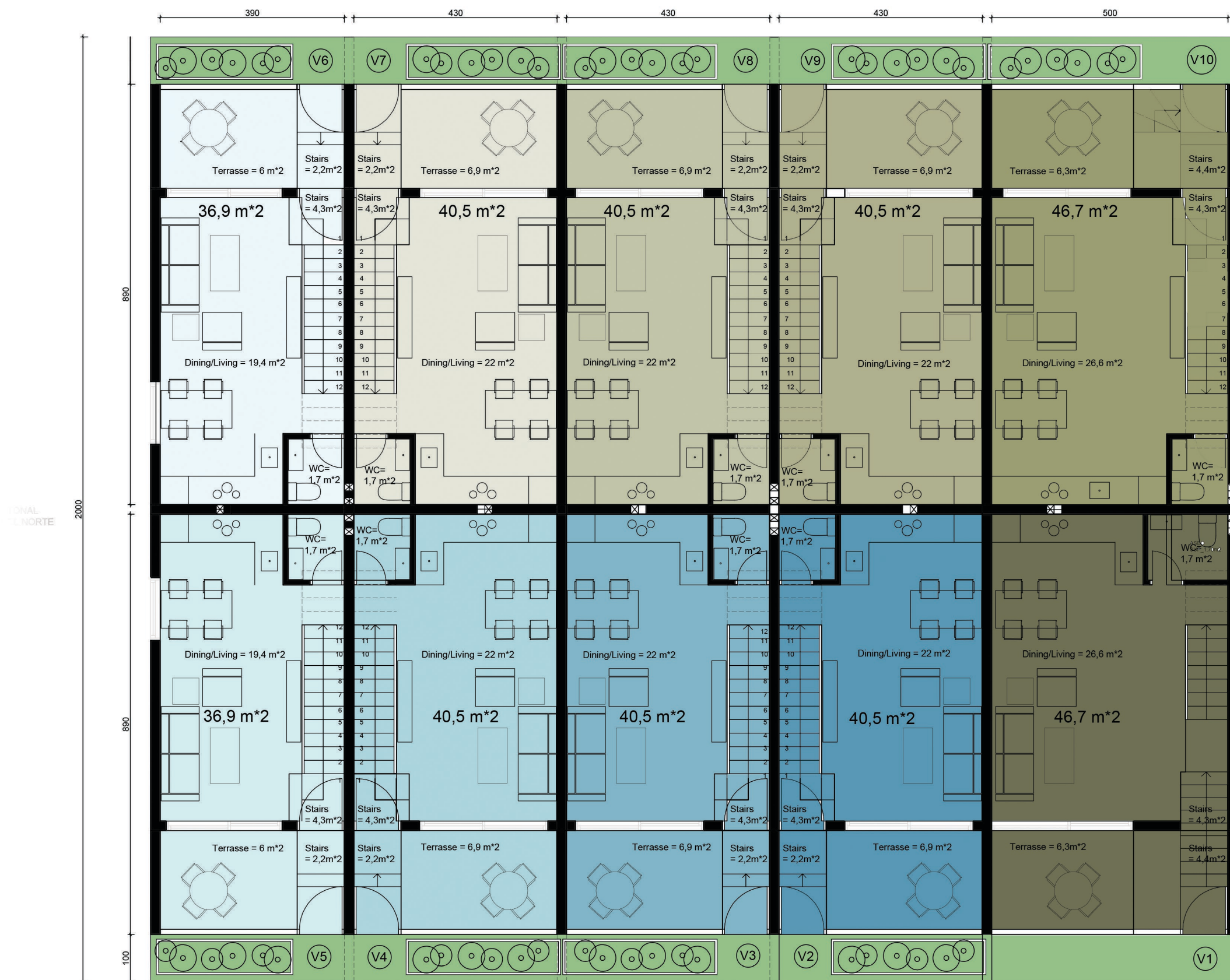


**Total area :**

- V1 - 15,4m<sup>2</sup>
- V2 - 26,1m<sup>2</sup>
- V3 - 26,1m<sup>2</sup>
- V4 - 25,7m<sup>2</sup>
- V5 - 37,9m<sup>2</sup>
- V6 - 38,3m<sup>2</sup>
- V7 - 25,7m<sup>2</sup>
- V8 - 26,1m<sup>2</sup>
- V9 - 26,1m<sup>2</sup>
- V10 - 19,4m<sup>2</sup>

**Basement**



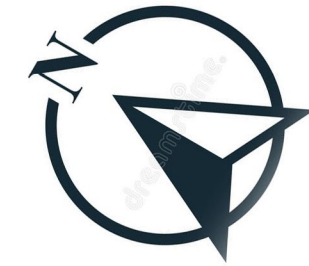
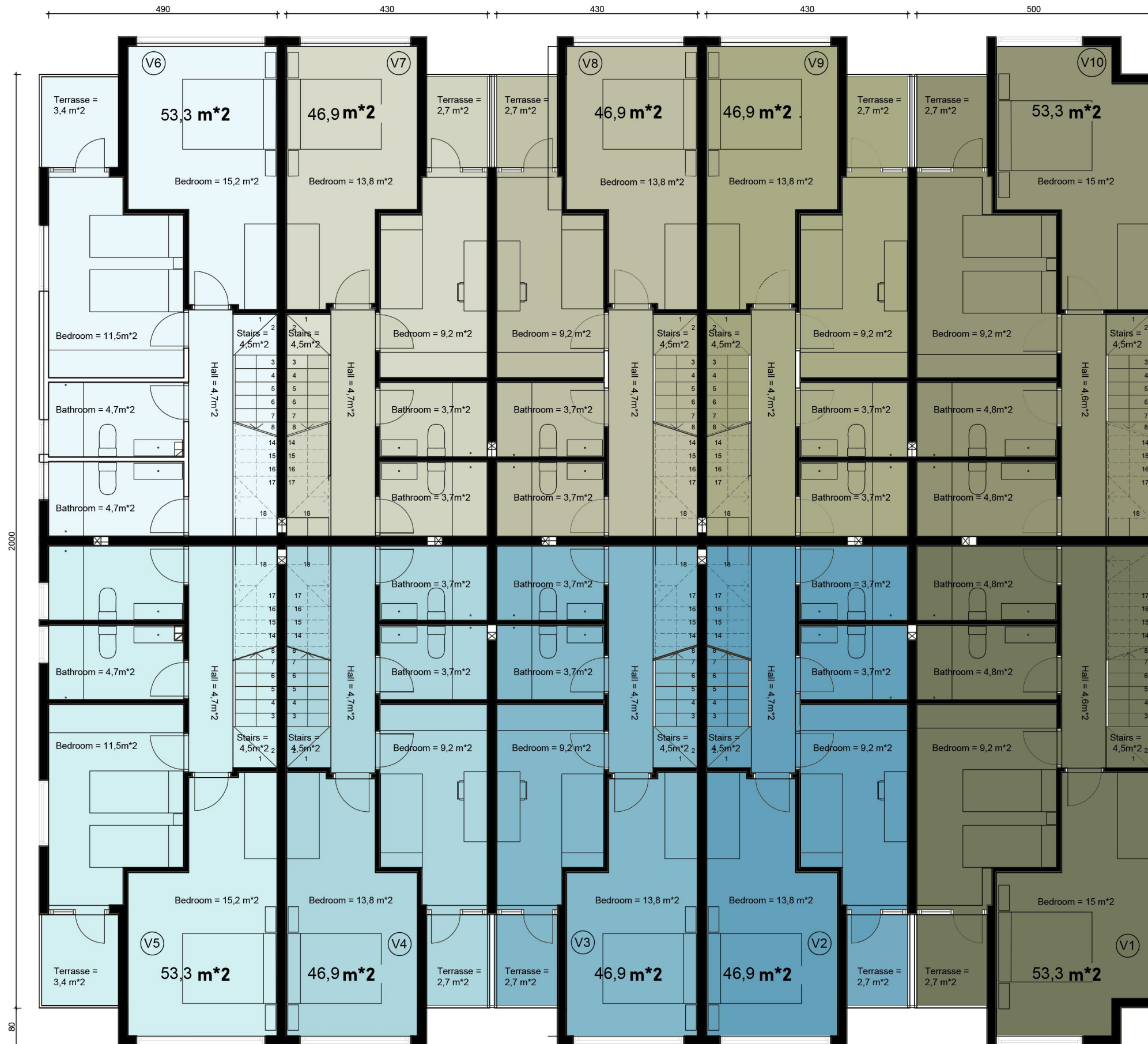


**Total area :**

- V1 - 46,7m\*2
- V2 - 40,5m\*2
- V3 - 40,5m\*2
- V4 - 40,5m\*2
- V5 - 36,9m\*2
- V6 - 36,9m\*2
- V7 - 40,5m\*2
- V8 - 40,5m\*2
- V9 - 40,5m\*2
- V10 - 46,7m\*2

**First Floor**





**Total area :**

- V1 - 53,3m<sup>2</sup>
- V2 - 46,9m<sup>2</sup>
- V3 - 46,9m<sup>2</sup>
- V4 - 46,9m<sup>2</sup>
- V5 - 53,3m<sup>2</sup>
- V6 - 53,3m<sup>2</sup>
- V7 - 46,9m<sup>2</sup>
- V8 - 46,9m<sup>2</sup>
- V9 - 46,9m<sup>2</sup>
- V10 - 53,3m<sup>2</sup>

**2nd Floor**



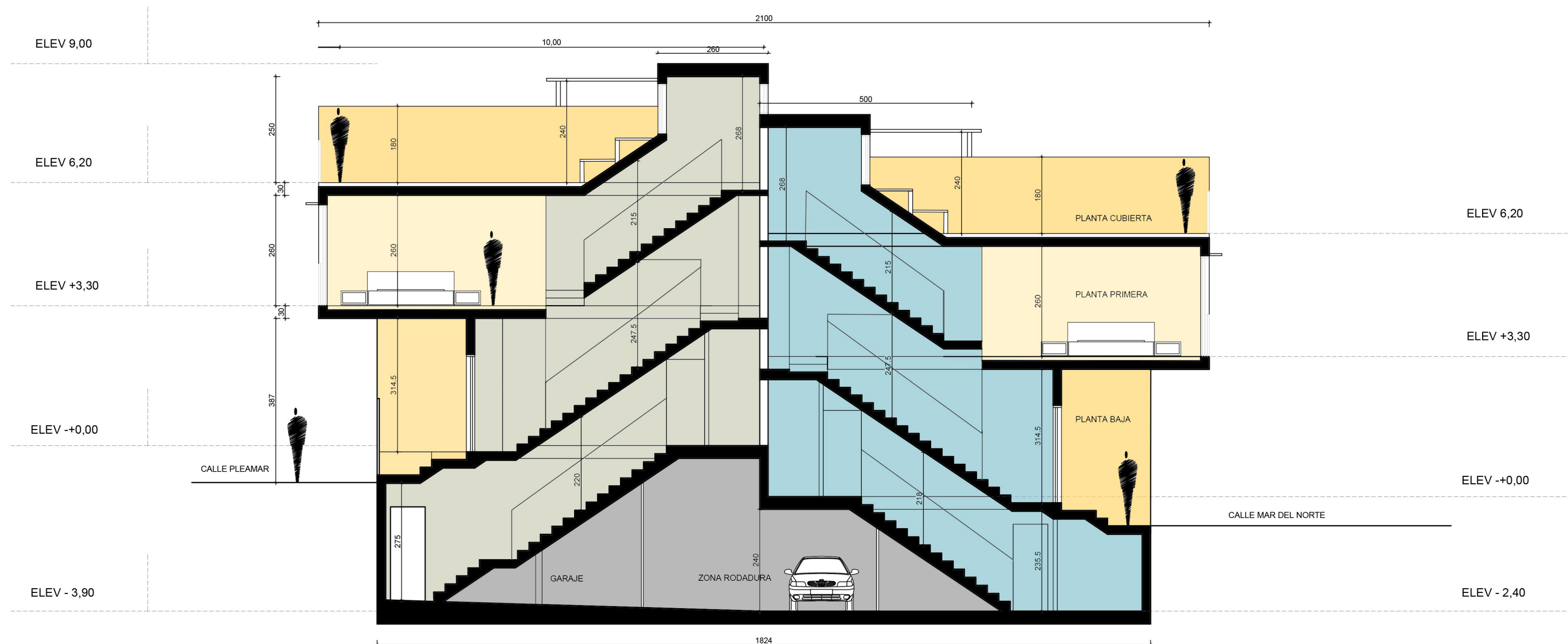


**Total area :**

- V1 - 53,3m\*2
- V2 - 46,9m\*2
- V3 - 46,9m\*2
- V4 - 46,9m\*2
- V5 - 53,3m\*2
- V6 - 53,3m\*2
- V7 - 46,9m\*2
- V8 - 46,9m\*2
- V9 - 46,9m\*2
- V10 - 53,3m\*2

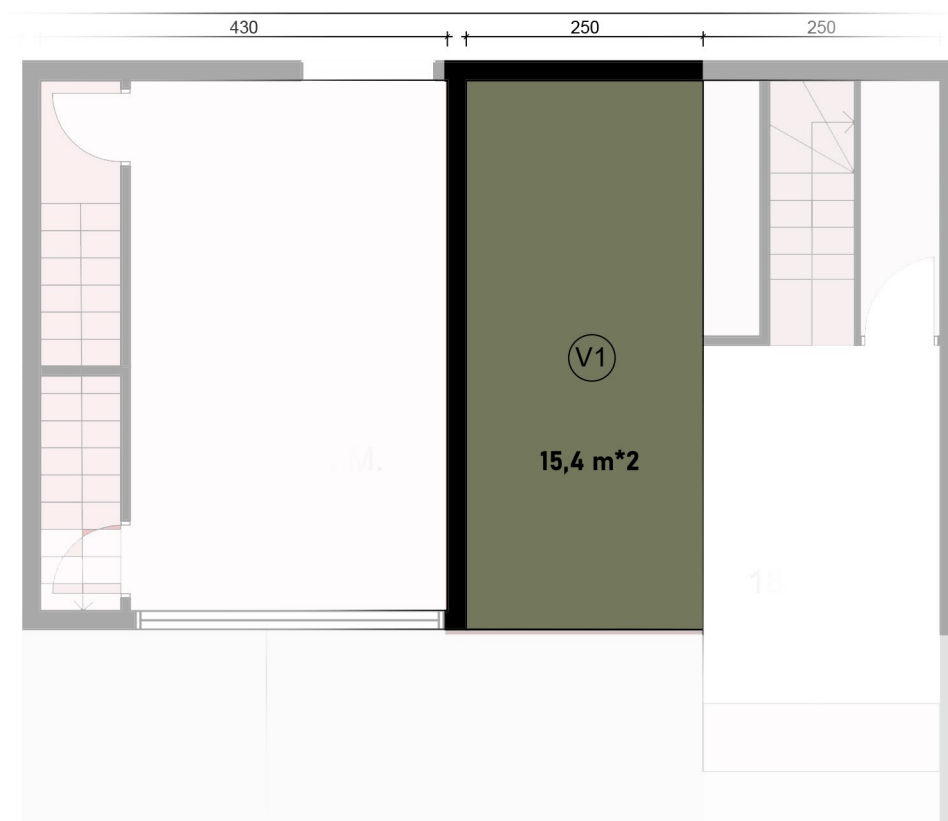
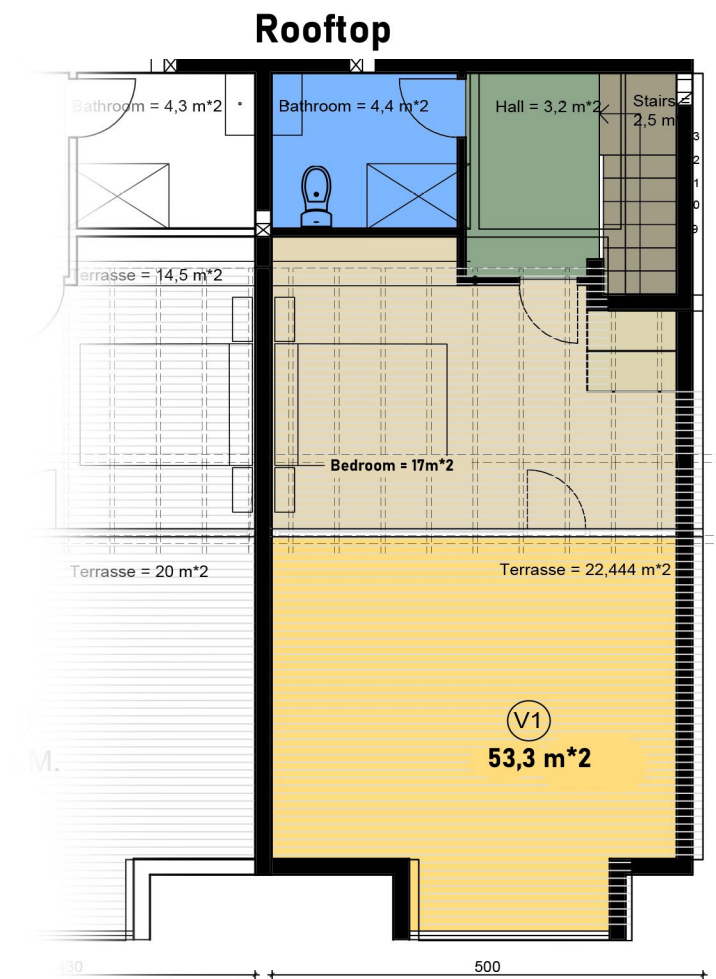
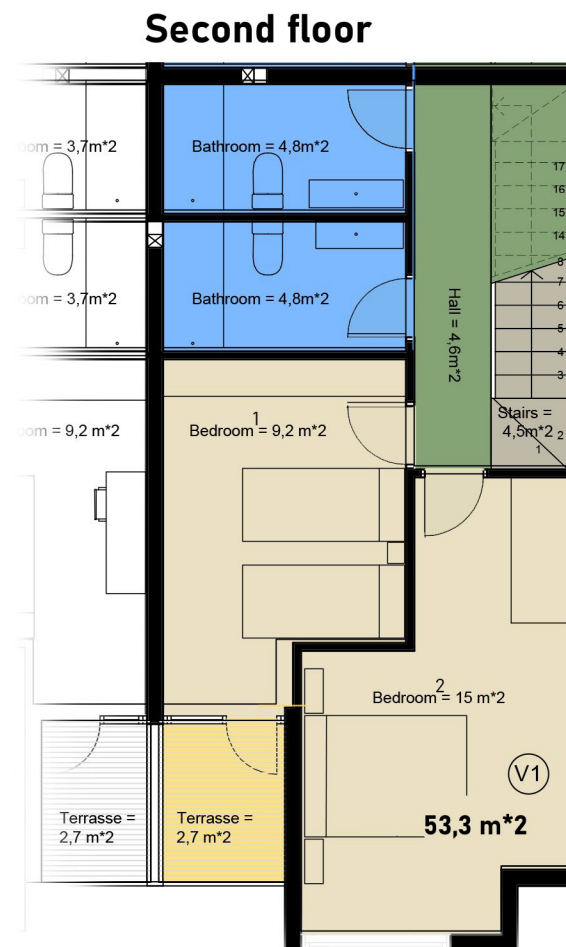
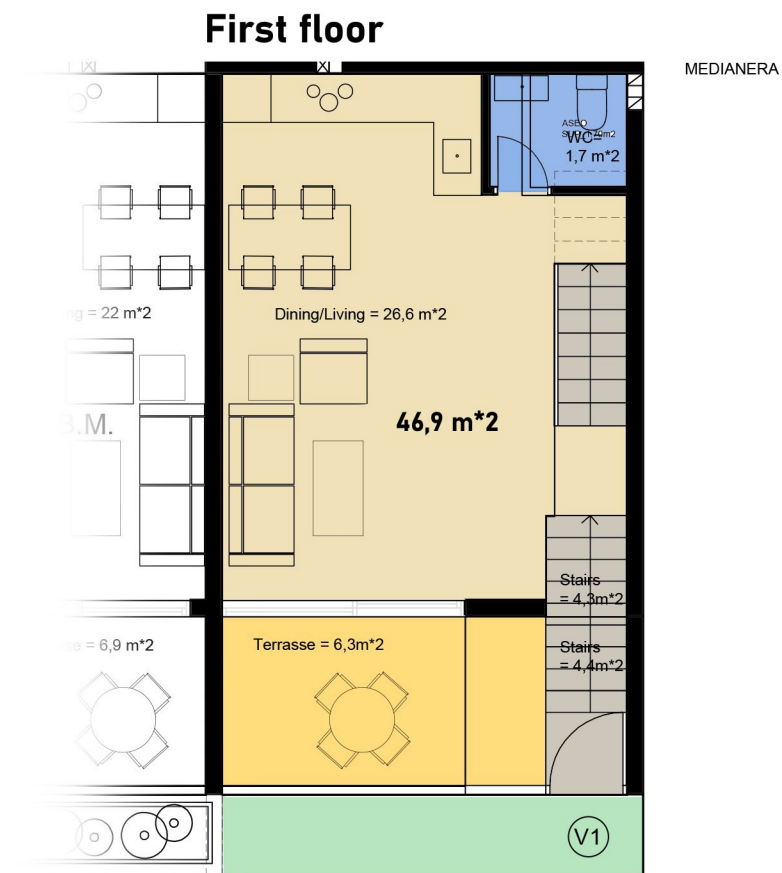
**Rooftop**





# Section A-A





**Garage**

## First floor

1. Dining/living room - 26,6m<sup>2</sup>
2. Terrasse - 6,3m<sup>2</sup>
3. Stairs - 8,7m<sup>2</sup>
4. WC - 1,7m<sup>2</sup>

## Rooftop

1. Bedroom - 17m<sup>2</sup>
2. Terrasse - 22,4
3. Stairs - 2,5m<sup>2</sup>
4. Bathroom - 4,4m<sup>2</sup>
5. Hall - 3,2m<sup>2</sup>

## Second Floor

1. Bedroom 1- 9m<sup>2</sup>
2. Bedroom 2 - 15m<sup>2</sup>
3. Terrasse - 2,7m<sup>2</sup>
4. Stairs - 4,5m<sup>2</sup>
5. Bathroom 1- 4,8m<sup>2</sup>
6. Bathroom 2 - 4,8m<sup>2</sup>
7. Hall - 4,6m<sup>2</sup>

**V1** - 154m<sup>2</sup> + 15,4m<sup>2</sup> garage+ 5,2m<sup>2</sup> garden



0. Etage

Stairs = 4,5 m<sup>2</sup>

Hall = 4,7 m<sup>2</sup>

Bathroom = 3,7 m<sup>2</sup>

Bathroom = 3,7 m<sup>2</sup>

Bedroom = 9,2 m<sup>2</sup>

Bedroom = 13,8 m<sup>2</sup>

Terrasse = 2,7 m<sup>2</sup>

Terrasse = 2,7 m<sup>2</sup>

46,9 m<sup>2</sup>

4,3 KB.M.

Architectural floor plan of a house. The plan includes a large yellow terrace at the bottom, a bedroom, two bathrooms, a hall, and stairs. Various rooms are labeled with their areas in square meters (m²). The plan also shows a caseton, a terrace, and a large yellow area labeled V2. The overall dimensions of the plot are 430m by 430m.

Rooms and Areas:

- CASETON: Hall = 2 m²
- Stairs = 2,5 m²
- Hall = 2m²
- Bathroom = 4,3 m²
- Bathroom = 4,4 m²
- Bedroom = 14,5m²
- Terrasse = 20 m²
- Terrasse = 17 m²
- V3: 44,3 KB.M.
- V2: 46,9 m²

Overall dimensions: 430m x 430m.

Architectural floor plan showing a room with a blue area labeled **26,1 m\*2** and a circular feature labeled **V2**. The plan includes a staircase area on the left and a wall with a door on the right. The room is labeled **S.M.** in the top left corner.

1. Dining/living room - 22m\*2
2. Terrasse - 6,9m\*2
3. Stairs - 6,5m\*2
4. WC - 1,7m\*2

1. Bedroom 1- 9,2m\*2
2. Bedroom 2 - 13,8m\*2
3. Terrasse - 2,7m\*2
4. Stairs - 4,5m\*2
5. Bathroom 1- 3,7m\*2
6. Bathroom 2 - 3,7m\*2
7. Hall - 4,7m\*2

1. Bedroom - 14,5m\*2
2. Terrasse - 20m\*2
3. Stairs - 2,5m\*2
4. Bathroom - 4,4m\*2
5. Hall - 2m\*2

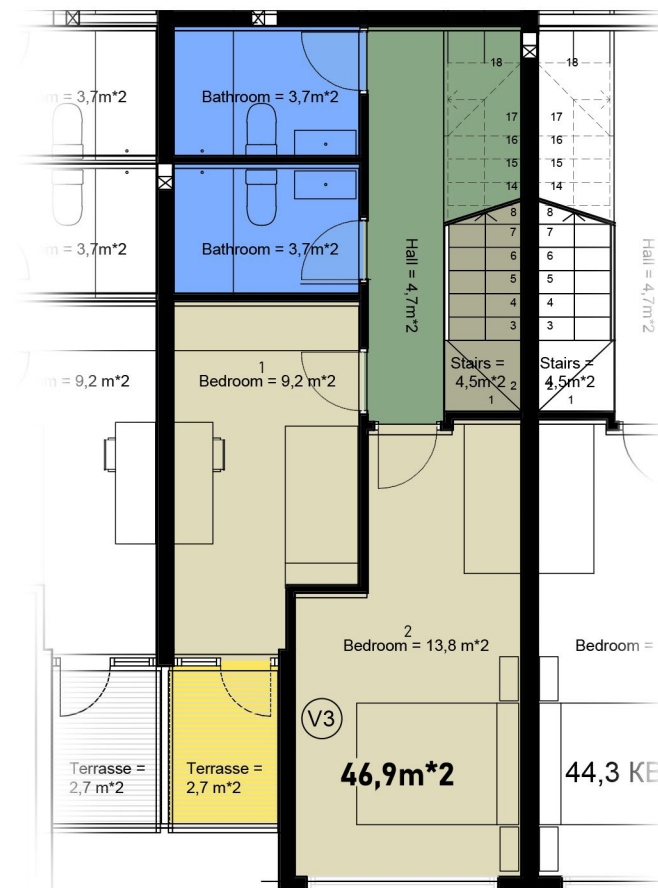
**V2 - 135m\*2 + 26,1m\*2 garage + 4,3m\*2 garden**



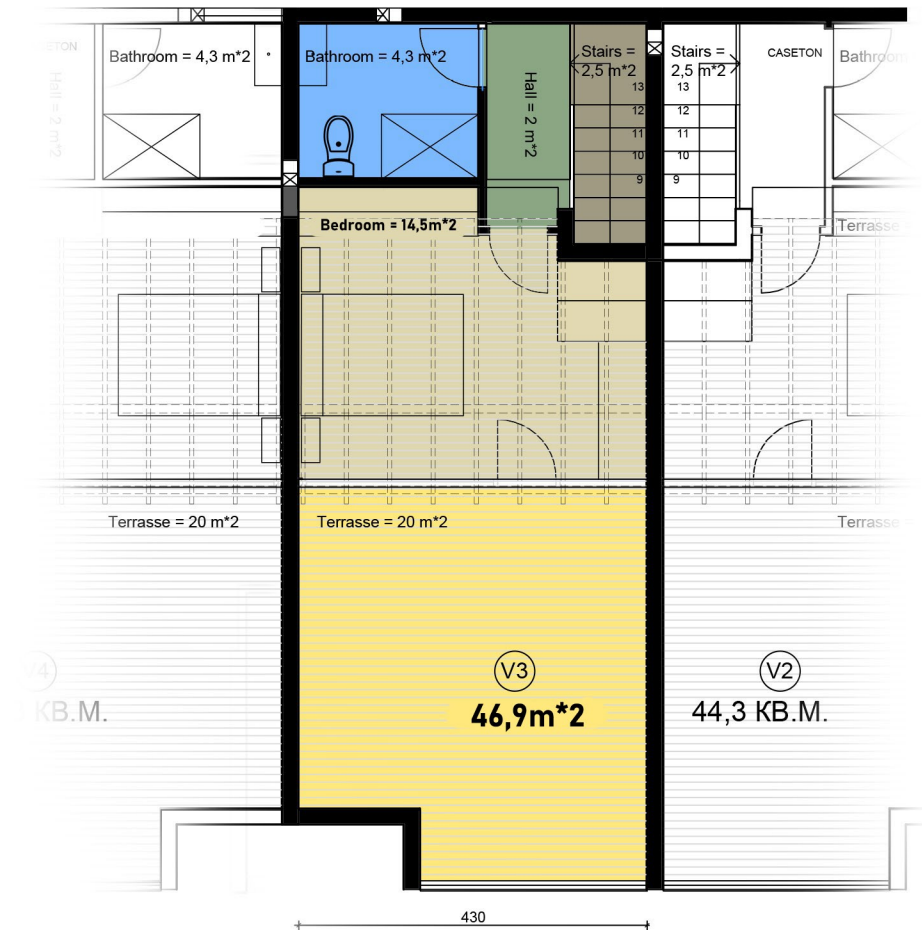
**First floor**



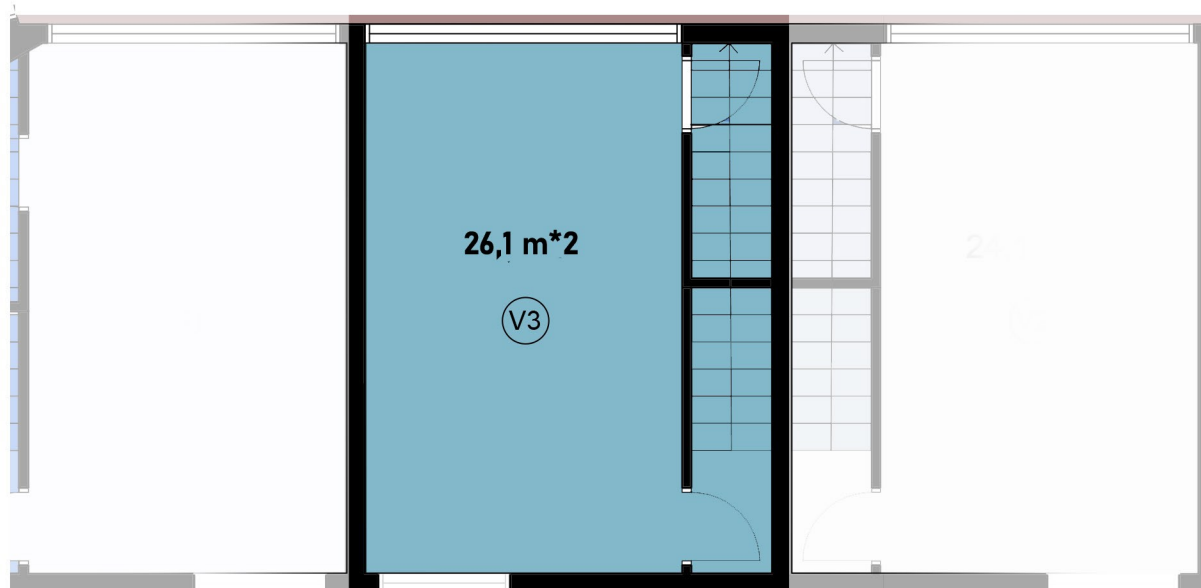
**Second floor**



**Rooftop**



**Garage**



**First floor**

1. Dining/living room - 22m\*2
2. Terrasse - 6,9m\*2
3. Stairs - 6,5m\*2
4. WC - 1,7m\*2

**Rooftop**

1. Bedroom - 14,5m\*2
2. Terrasse - 20m\*2
3. Stairs - 2,5m\*2
4. Bathroom - 4,3m\*2
5. Hall - 2m\*2

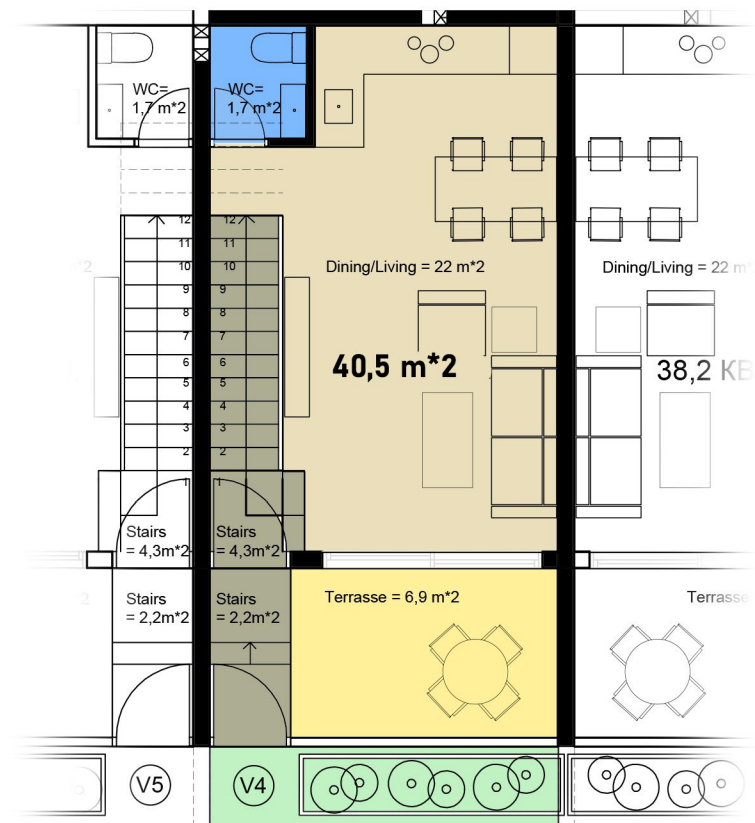
**Second Floor**

1. Bedroom 1- 9,2m\*2
2. Bedroom 2 - 13,8m\*2
3. Terrasse - 2,7m\*2
4. Stairs - 4,5m\*2
5. Bathroom 1- 3,7m\*2
6. Bathroom 2 - 3,7m\*2
7. Hall - 4,7m\*2

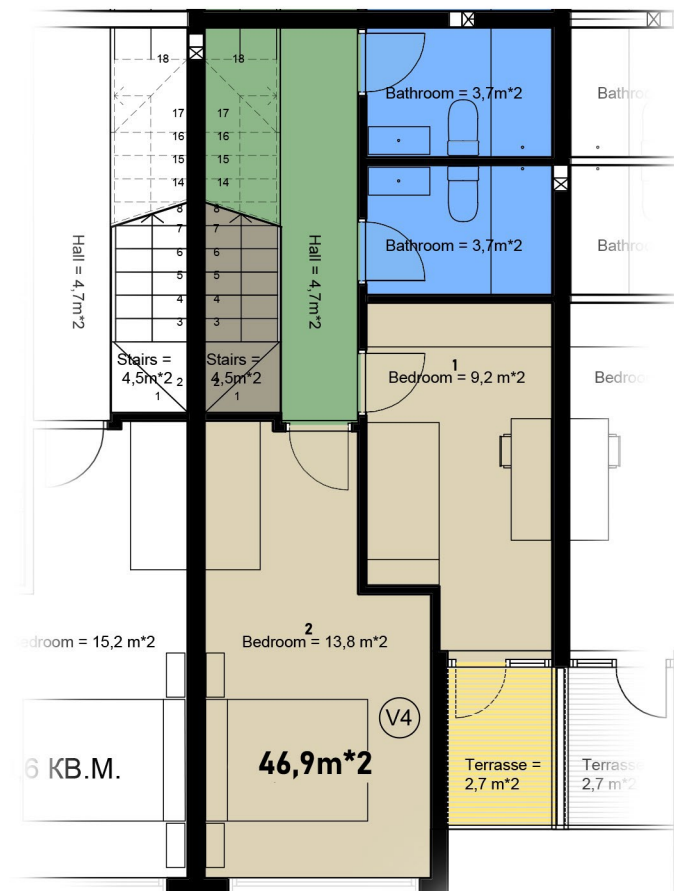
**V3** - 135m\*2 + 26,1m\*2 garage + 4,3m\*2 garden



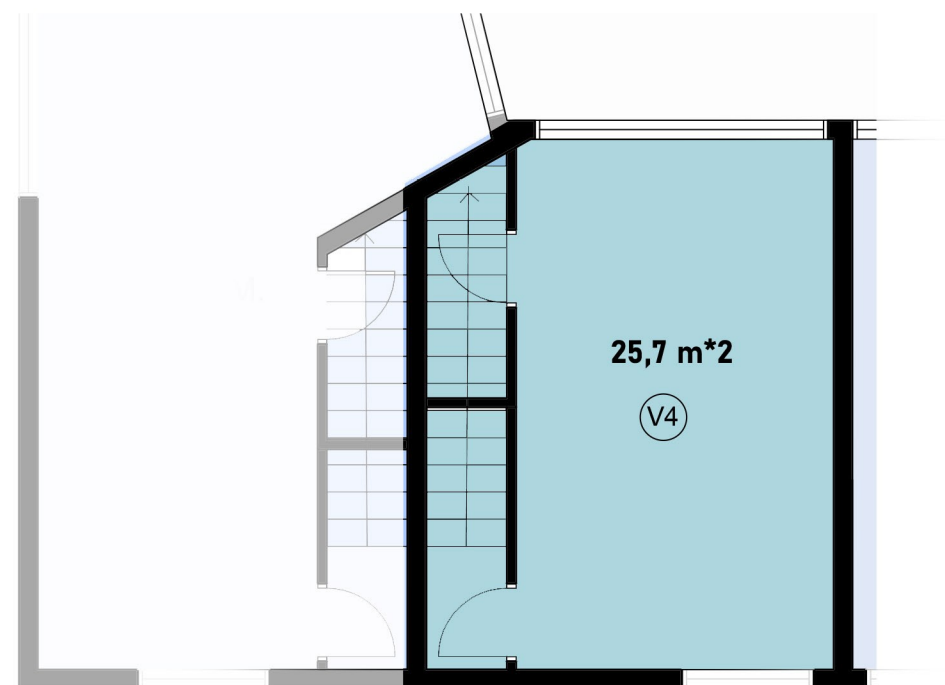
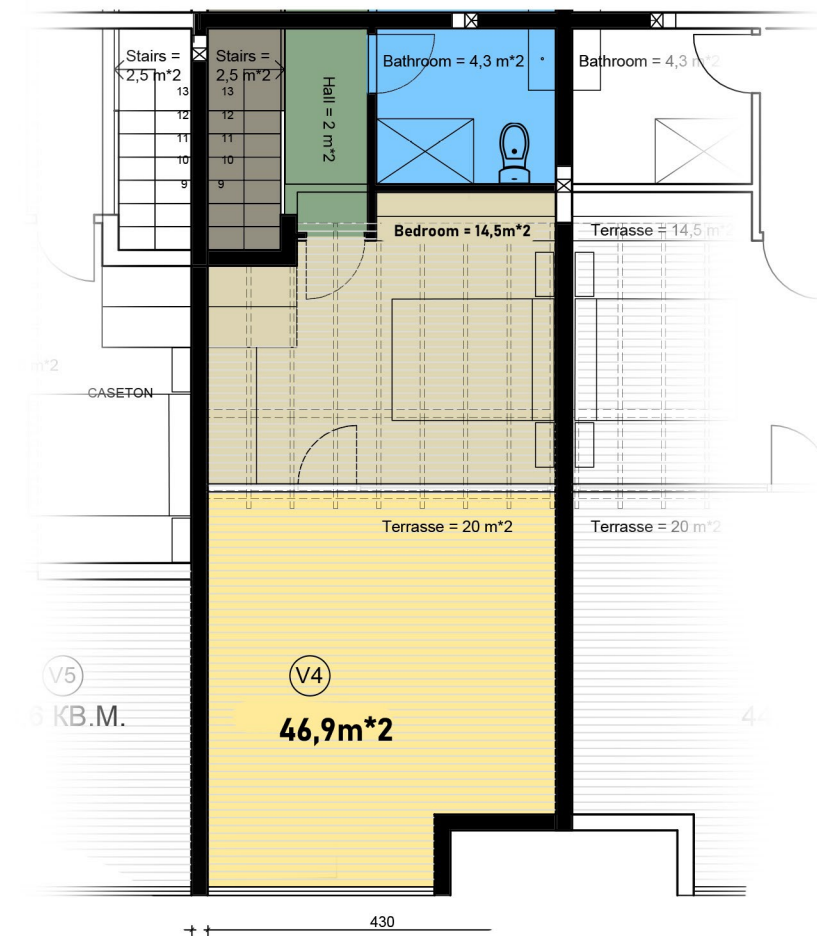
**First floor**



**Second floor**



**Rooftop**



**Garage**

### First floor

1. Dining/living room - 22m²
2. Terrasse - 6,9m²
3. Stairs - 6,5m²
4. WC - 1,7m²

### Rooftop

1. Bedroom - 14,5m²
2. Terrasse - 20m²
3. Stairs - 2,5m²
4. Bathroom - 4,4m²
5. Hall - 2m²

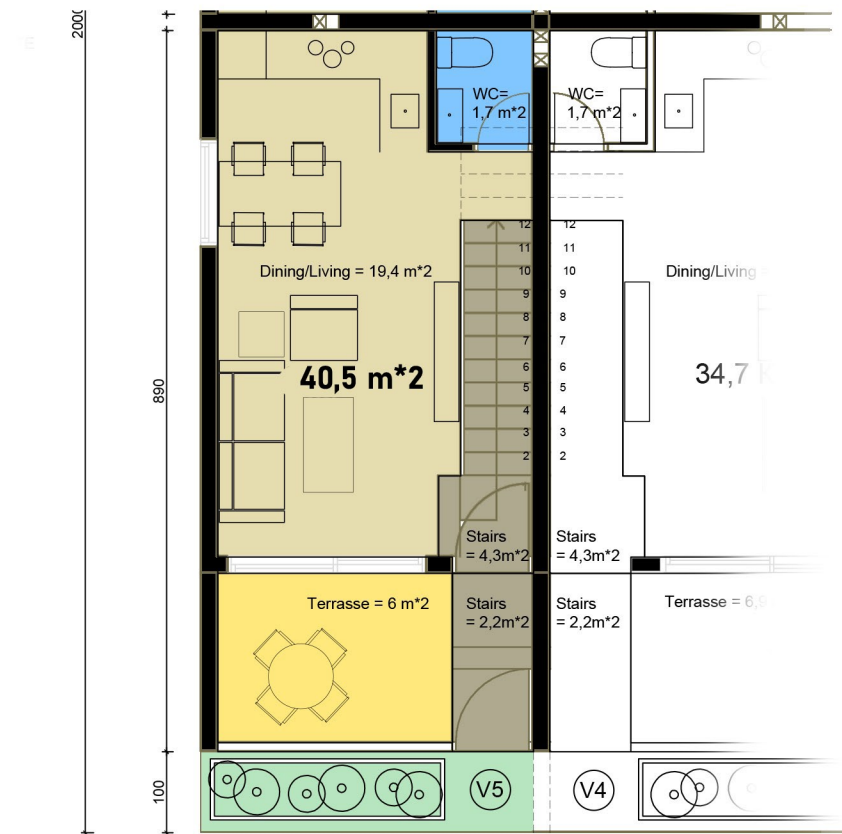
### Second Floor

1. Bedroom 1- 9,2m²
2. Bedroom 2 - 13,8m²
3. Terrasse - 2,7m²
4. Stairs - 4,5m²
5. Bathroom 1- 3,7m²
6. Bathroom 2 - 3,7m²
7. Hall - 4,7m²

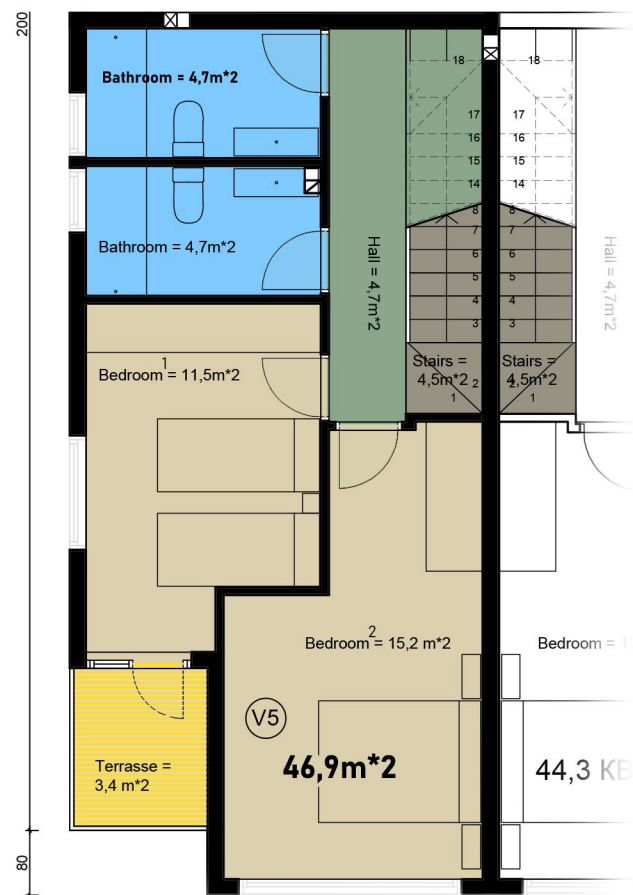
**V4** - 135m² + 25,7m² garage + 4,3m² garden



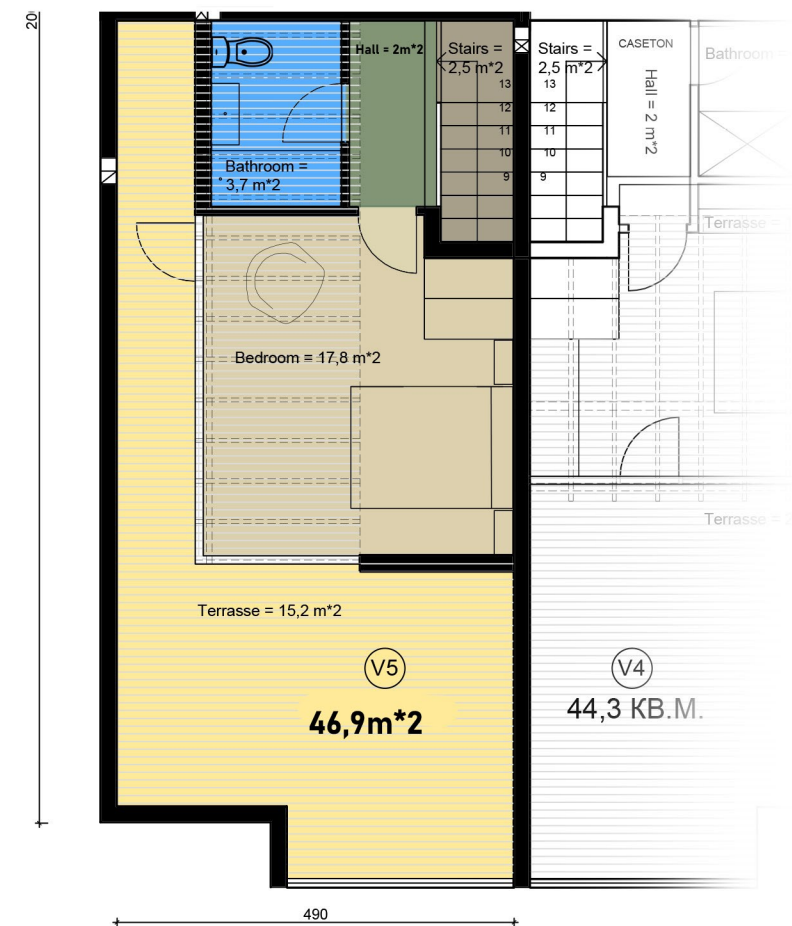
**First floor**



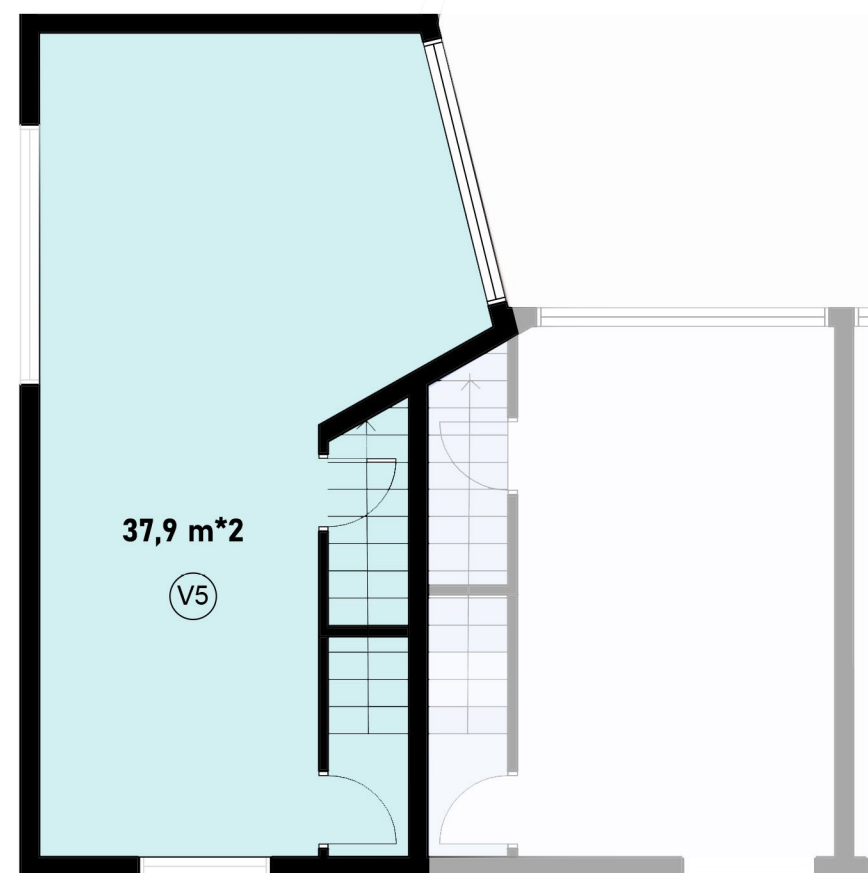
**Second floor**



**Rooftop**



**Garage**



**First floor**

1. Dining/living room - 19,4m<sup>2</sup>
2. Terrasse - 6m<sup>2</sup>
3. Stairs - 6,5m<sup>2</sup>
4. WC - 1,7m<sup>2</sup>

**Rooftop**

1. Bedroom - 17,8m<sup>2</sup>
2. Terrasse - 15,2m<sup>2</sup>
3. Stairs - 2,5m<sup>2</sup>
4. Bathroom - 3,7m<sup>2</sup>
5. Hall - 2m<sup>2</sup>

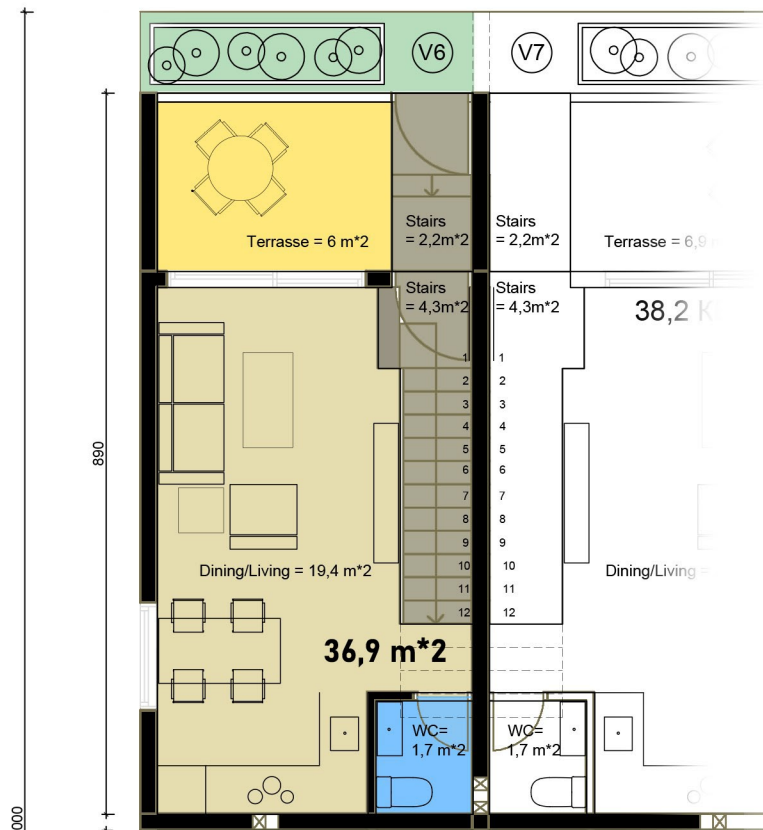
**Second Floor**

1. Bedroom 1- 11,5m<sup>2</sup>
2. Bedroom 2 - 15,2m<sup>2</sup>
3. Terrasse - 3,4m<sup>2</sup>
4. Stairs - 4,5m<sup>2</sup>
5. Bathroom 1- 4,7m<sup>2</sup>
6. Bathroom 2 - 4,7m<sup>2</sup>
7. Hall - 4,7m<sup>2</sup>

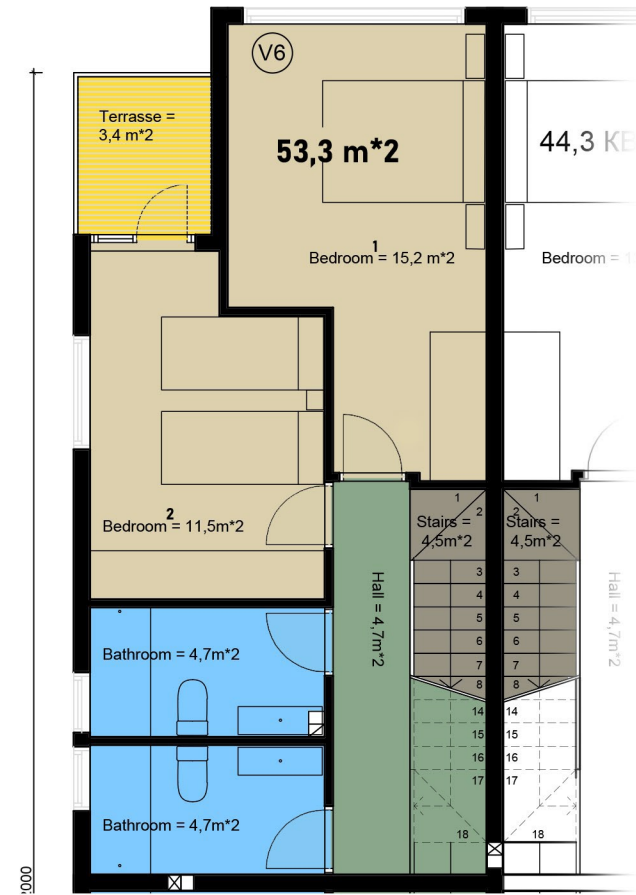
**V5** - 135m<sup>2</sup> + 37,9m<sup>2</sup> garage + 4,3m<sup>2</sup> garden



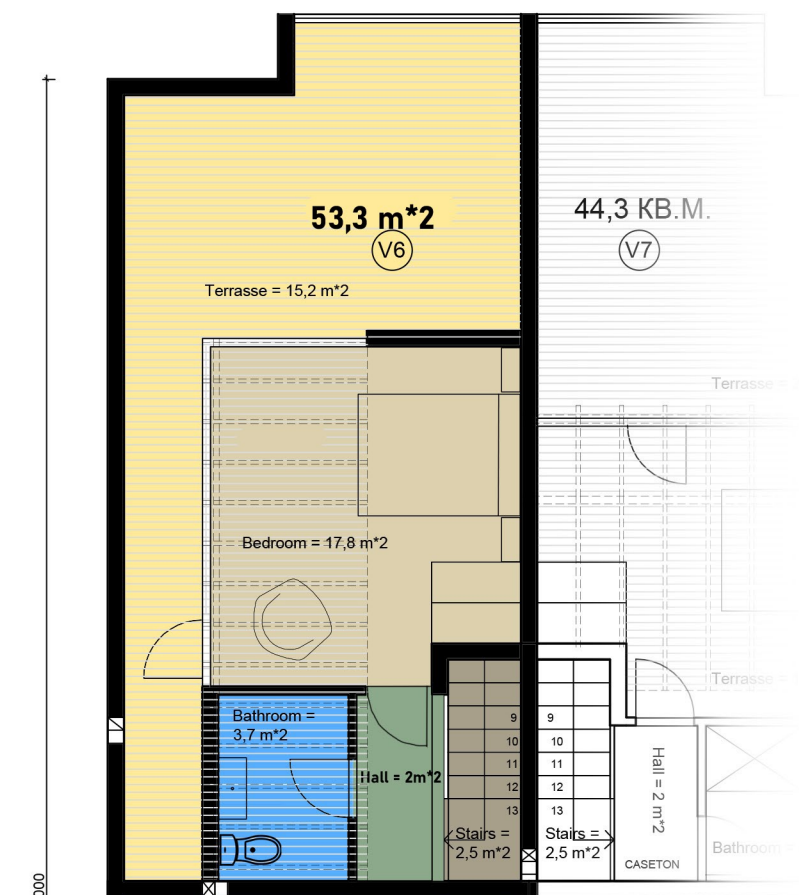
## First floor



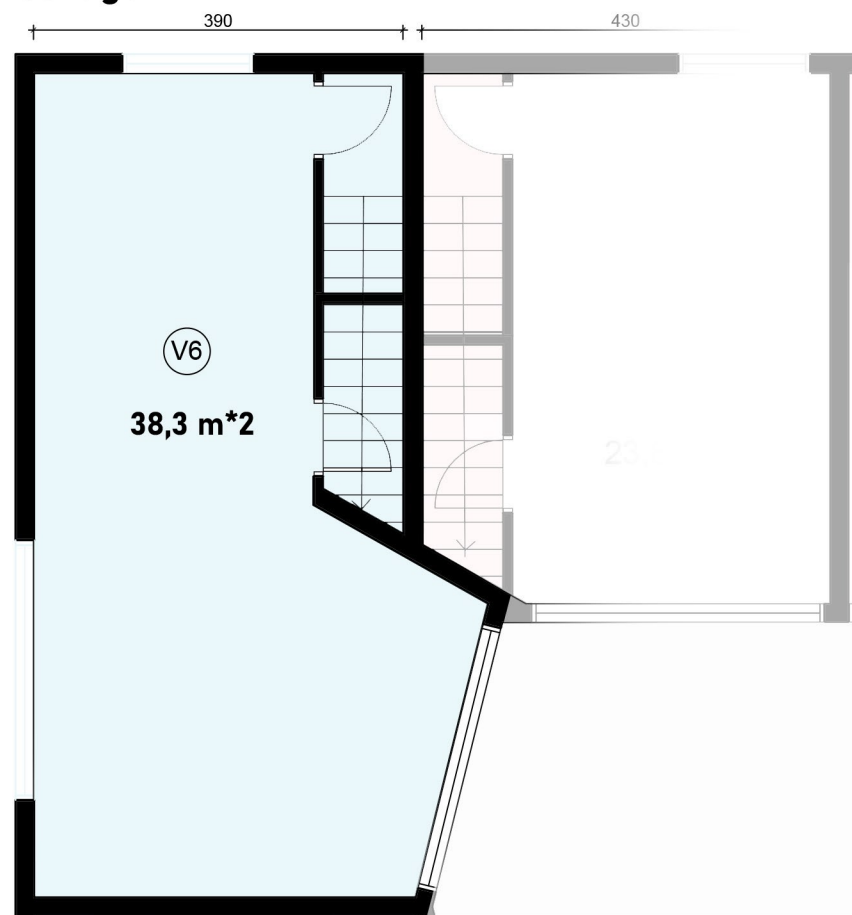
## Second floor



## Rooftop



## Garage



## First floor

1. Dining/living room - 19,4m\*2
2. Terrasse - 6m\*2
3. Stairs - 6,5m\*2
4. WC - 1,7m\*2

## Rooftop

1. Bedroom - 17,8m\*2
2. Terrasse - 15,2m\*2
3. Stairs - 2,5m\*2
4. Bathroom - 3,7m\*2
5. Hall - 2m\*2

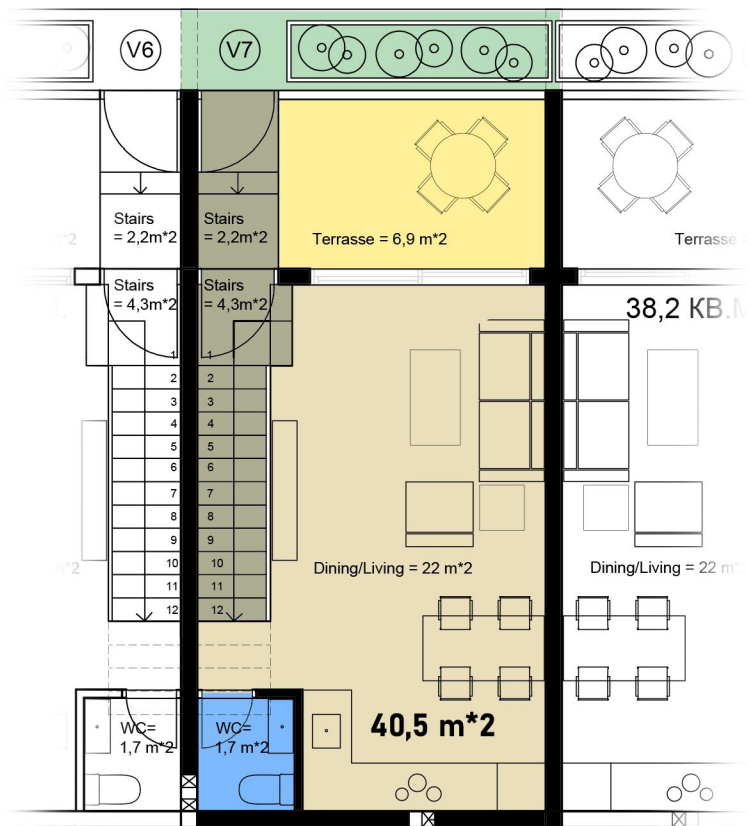
## Second Floor

1. Bedroom 1- 15,2m\*2
2. Bedroom 2 - 11,5m\*2
3. Terrasse - 3,4m\*2
4. Stairs - 4,5m\*2
5. Bathroom 1- 4,7m\*2
6. Bathroom 2 - 4,7m\*2
7. Hall - 4,7m\*2

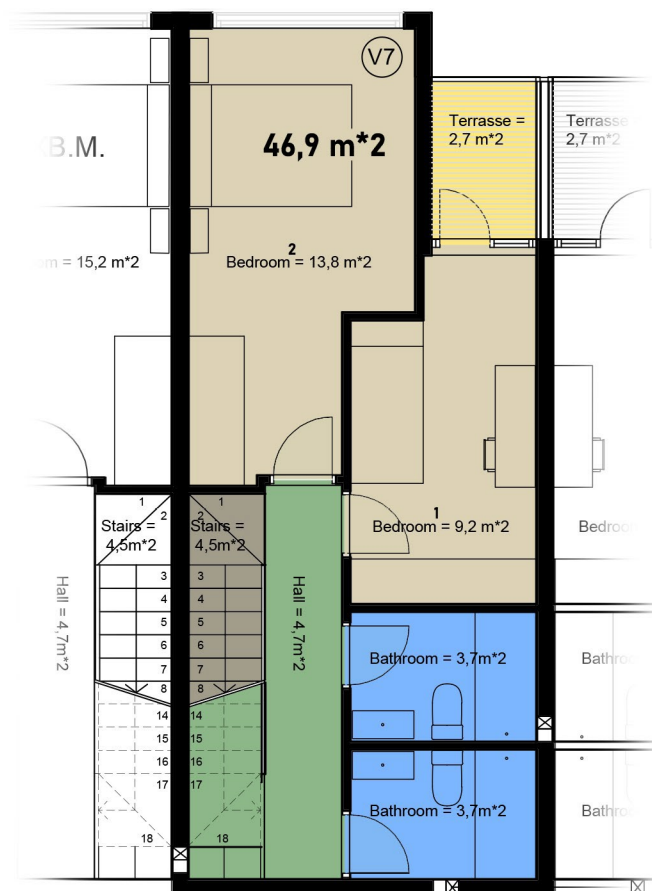
**V6** - 144m\*2 + 38,3m\*2 garage + 4,3m\*2 garden



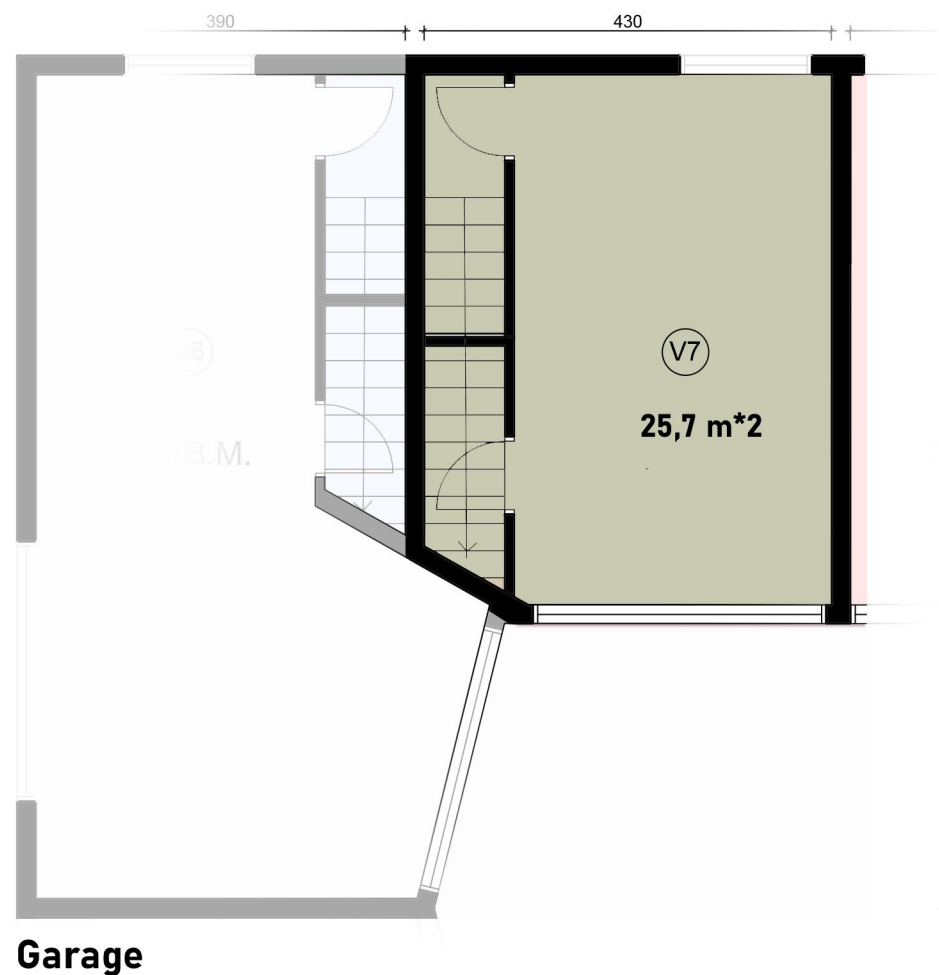
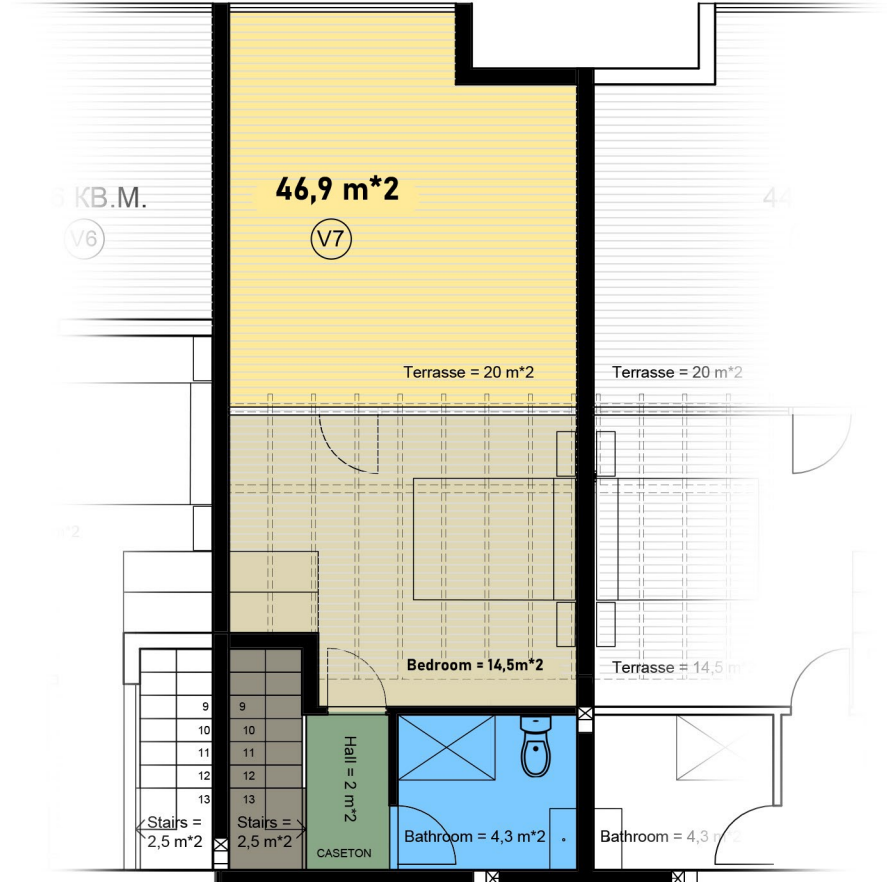
**First floor**



**Second floor**



**Rooftop**



**First floor**

1. Dining/living room - 22m\*2
2. Terrasse - 6,9m\*2
3. Stairs - 6,5m\*2
4. WC - 1,7m\*2

**Rooftop**

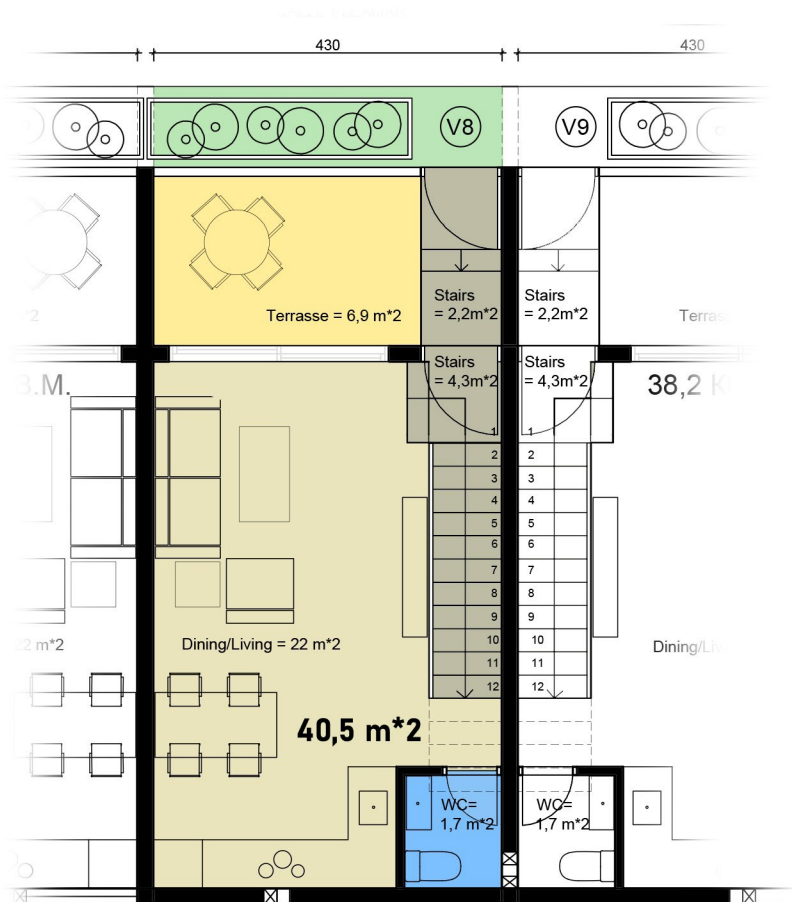
1. Bedroom - 14,5m\*2
2. Terrasse - 20m\*2
3. Stairs - 2,5m\*2
4. Bathroom - 4,3m\*2
5. Hall - 2m\*2

**Second Floor**

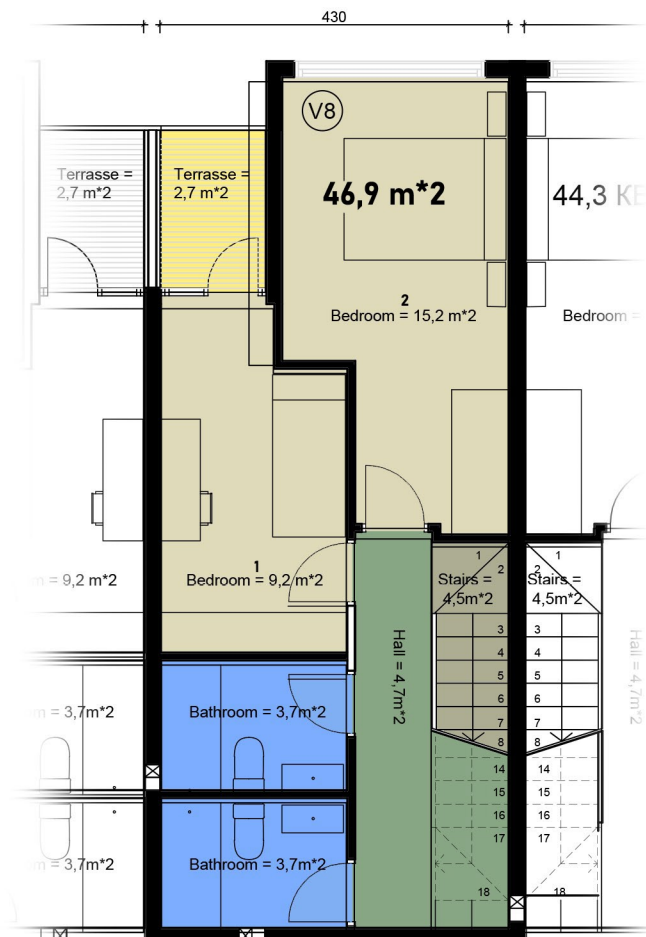
1. Bedroom 1- 9,2m\*2
2. Bedroom 2 - 13,8m\*2
3. Terrasse - 2,7m\*2
4. Stairs - 4,5m\*2
5. Bathroom 1- 3,7m\*2
6. Bathroom 2 - 3,7m\*2
7. Hall - 4,7m\*2

**V7** - 135m\*2 + 25,7m\*2 garage + 4,3m\*2 garden

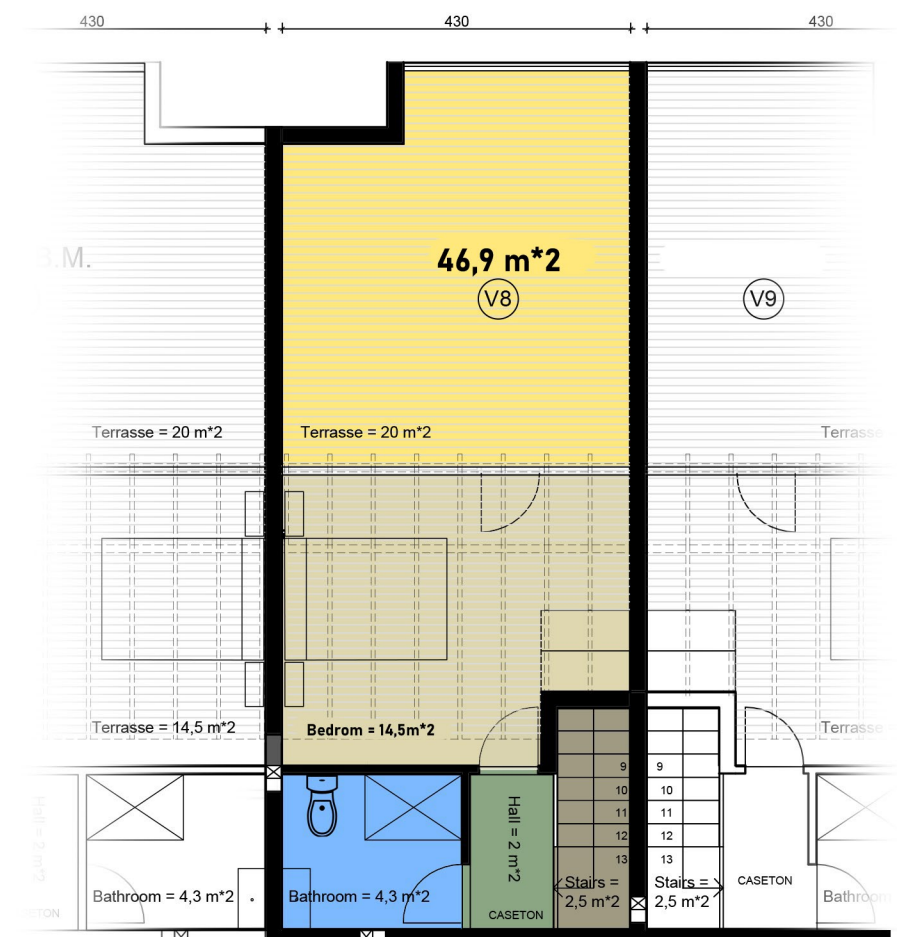




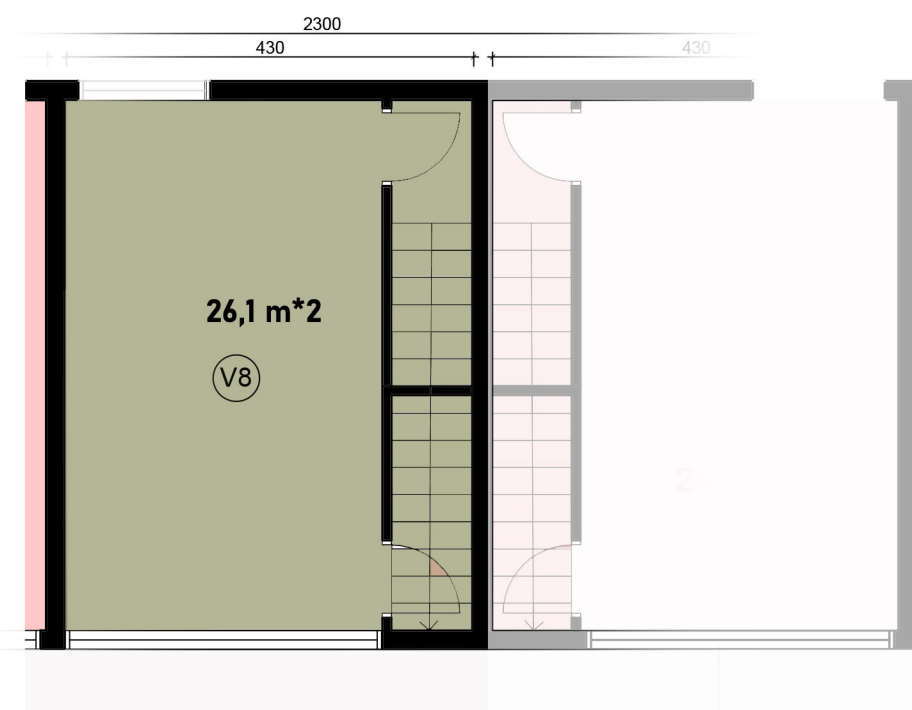
**First floor**



**Second floor**



**Rooftop**



**Garage**

## First floor

1. Dining/living room - 22m\*2
2. Terrasse - 6,9m\*2
3. Stairs - 6,5m\*2
4. WC - 1,7m\*2

## Rooftop

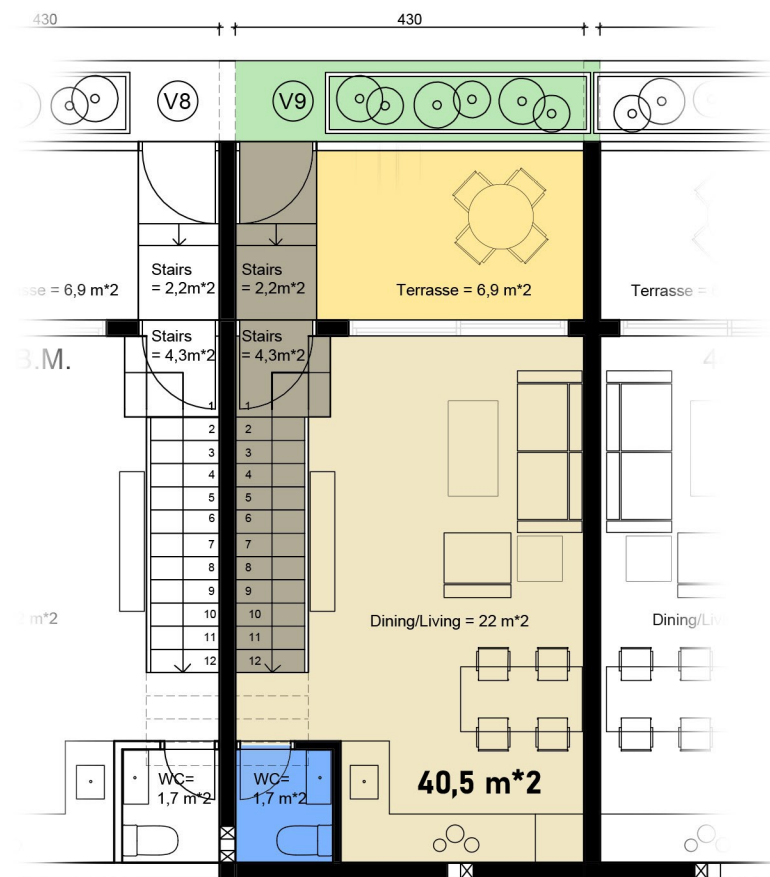
1. Bedroom - 14,5m\*2
2. Terrasse - 20m\*2
3. Stairs - 2,5m\*2
4. Bathroom - 4,3m\*2
5. Hall - 2m\*2

## Second Floor

1. Bedroom 1- 9,2m\*2
2. Bedroom 2 - 15,2m\*2
3. Terrasse - 2,7m\*2
4. Stairs - 4,5m\*2
5. Bathroom 1- 3,7m\*2
6. Bathroom 2 - 3,7m\*2
7. Hall - 4,7m\*2

**V8** - 135m\*2 + 26,1m\*2 garage + 4,3m\*2 garden

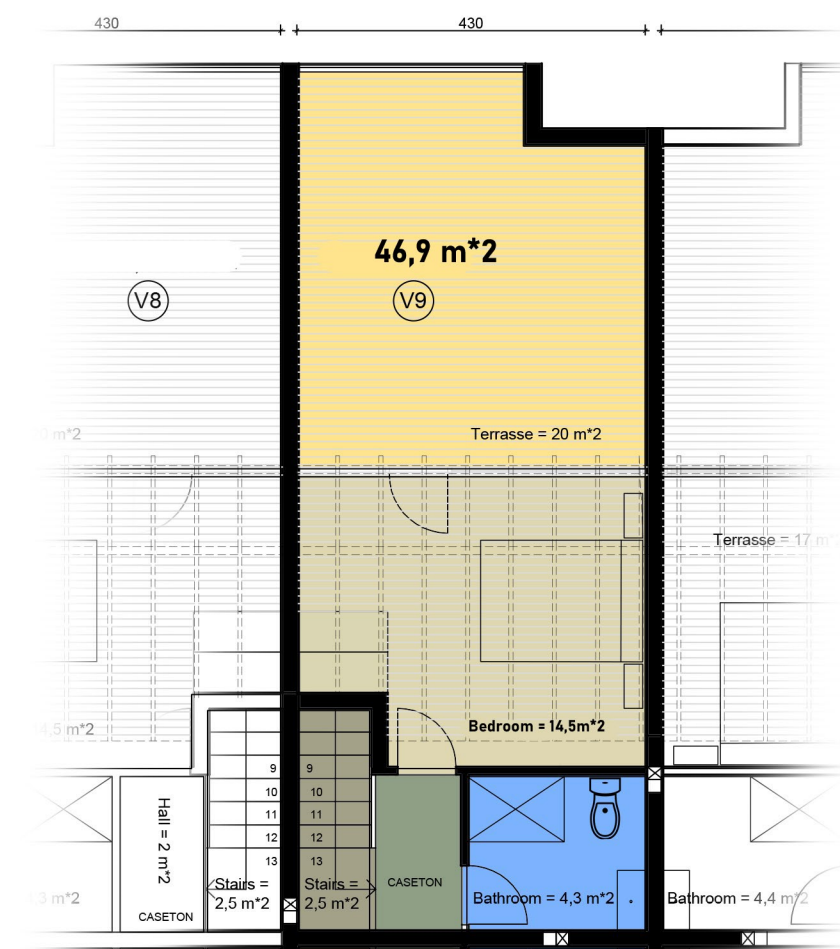




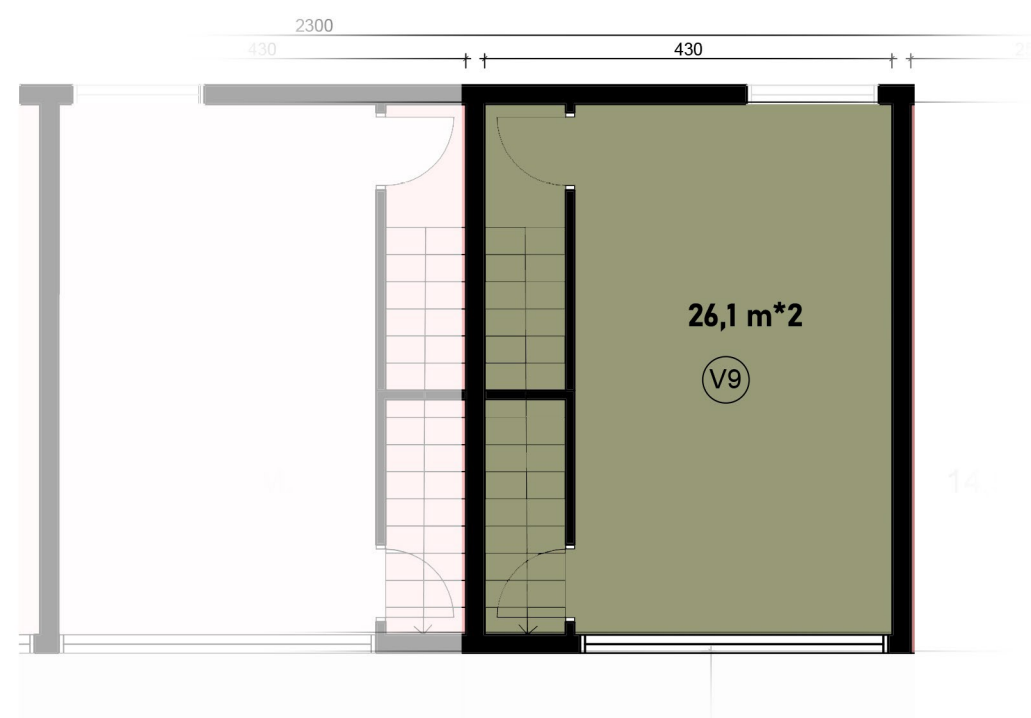
**First floor**



**Second floor**



**Rooftop**



**Garage**

## First floor

1. Dining/living room - 22m\*2
2. Terrasse - 6,9m\*2
3. Stairs - 6,5m\*2
4. WC - 1,7m\*2

## Rooftop

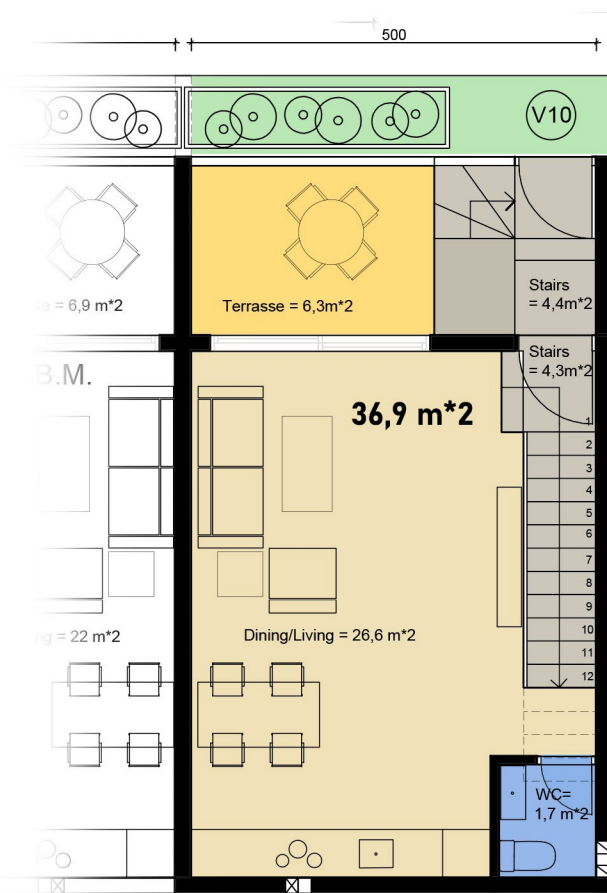
1. Bedroom - 14,5m\*2
2. Terrasse - 20m\*2
3. Stairs - 2,5m\*2
4. Bathroom - 4,3m\*2
5. Hall - 2m\*2

## Second Floor

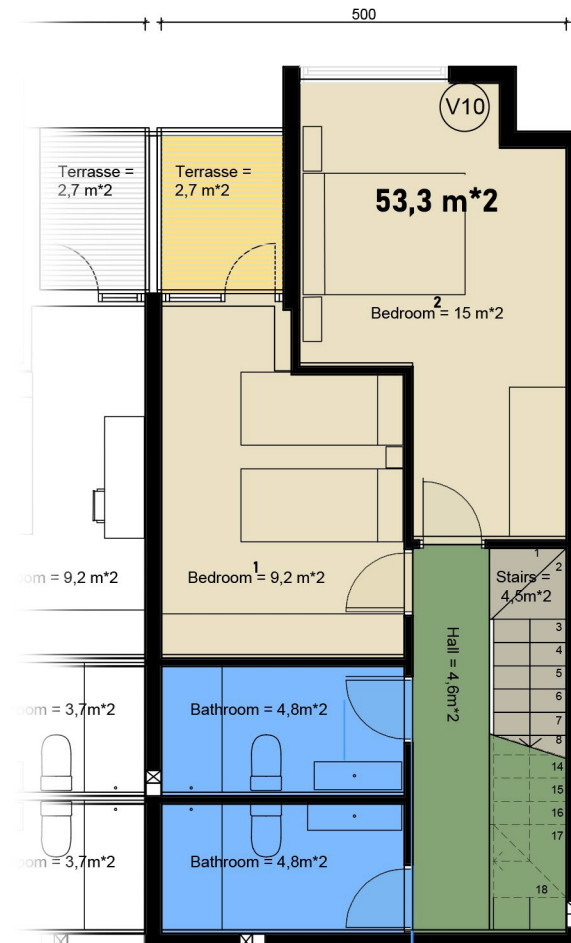
1. Bedroom 1- 9,2m\*2
2. Bedroom 2 - 13,8m\*2
3. Terrasse - 2,7m\*2
4. Stairs - 4,5m\*2
5. Bathroom 1- 3,7m\*2
6. Bathroom 2 - 3,7m\*2
7. Hall - 4,7m\*2

**V9** - 135m\*2 + 26,1m\*2 garage + 4,3m\*2 garden

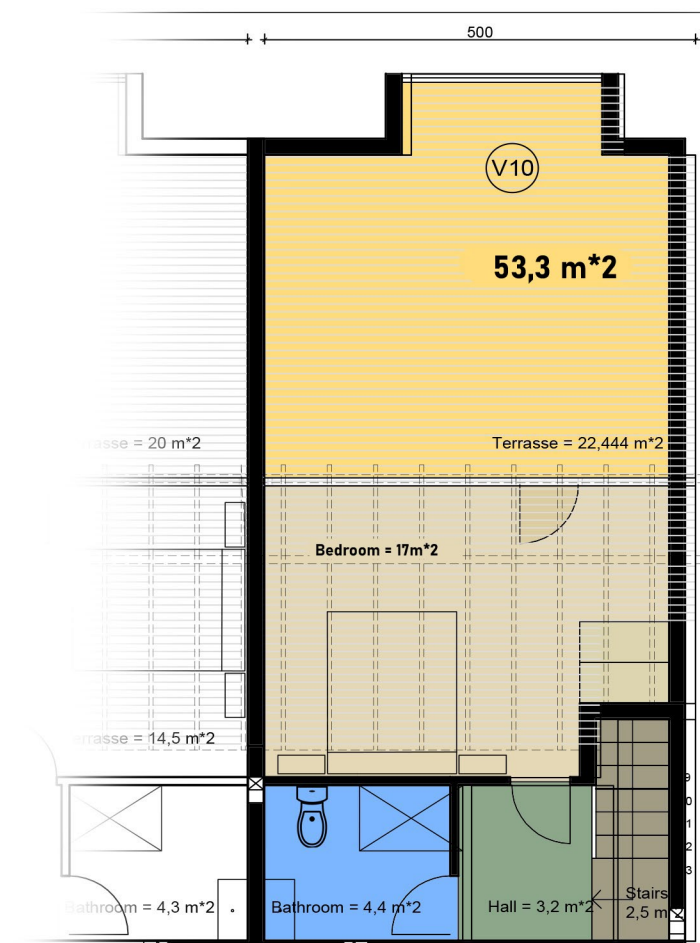




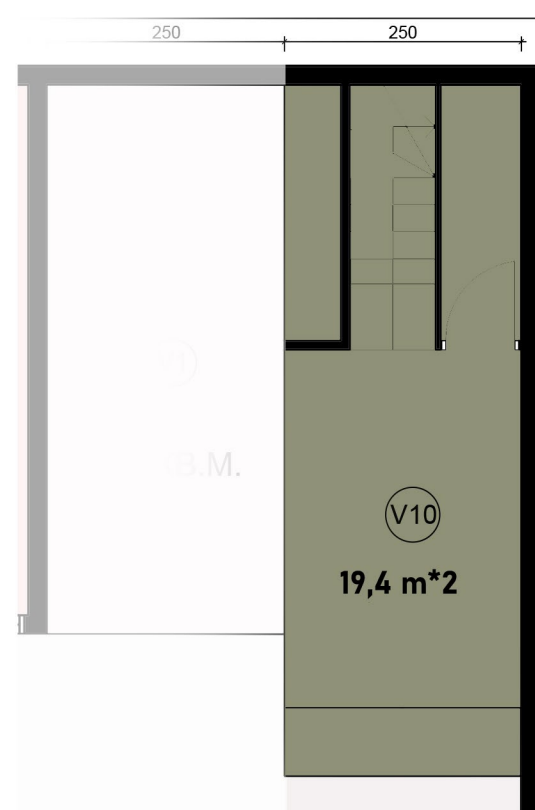
**First floor**



**Second floor**



**Rooftop**



**Garage**

## First floor

1. Dining/living room - 26,6m\*2
2. Terrasse - 6,9m\*2
3. Stairs - 6,5m\*2
4. WC - 1,7m\*2

## Rooftop

1. Bedroom - 17m\*2
2. Terrasse - 22,4m\*2
3. Stairs - 2,5m\*2
4. Bathroom - 4,4m\*2
5. Hall - 3,2m\*2

## Second Floor

1. Bedroom 1- 9,2m\*2
2. Bedroom 2 - 15m\*2
3. Terrasse - 2,7m\*2
4. Stairs - 4,5m\*2
5. Bathroom 1- 4,8m\*2
6. Bathroom 2 - 4,8m\*2
7. Hall - 4,7m\*2

**V10** - 144m\*2 + 19,4m\*2 garage + 5,3m\*2 garden





# Row Houses - Ocean View

Tenerife , Playa San Juan





# Row Houses - Ocean View

Tenerife , Playa San Juan





# Row Houses - Ocean View

Tenerife , Playa San Juan





# Row Houses - Ocean View

Tenerife , Playa San Juan





# Row Houses - Ocean View

Tenerife , Playa San Juan





# Row Houses - Ocean View

Tenerife , Playa San Juan